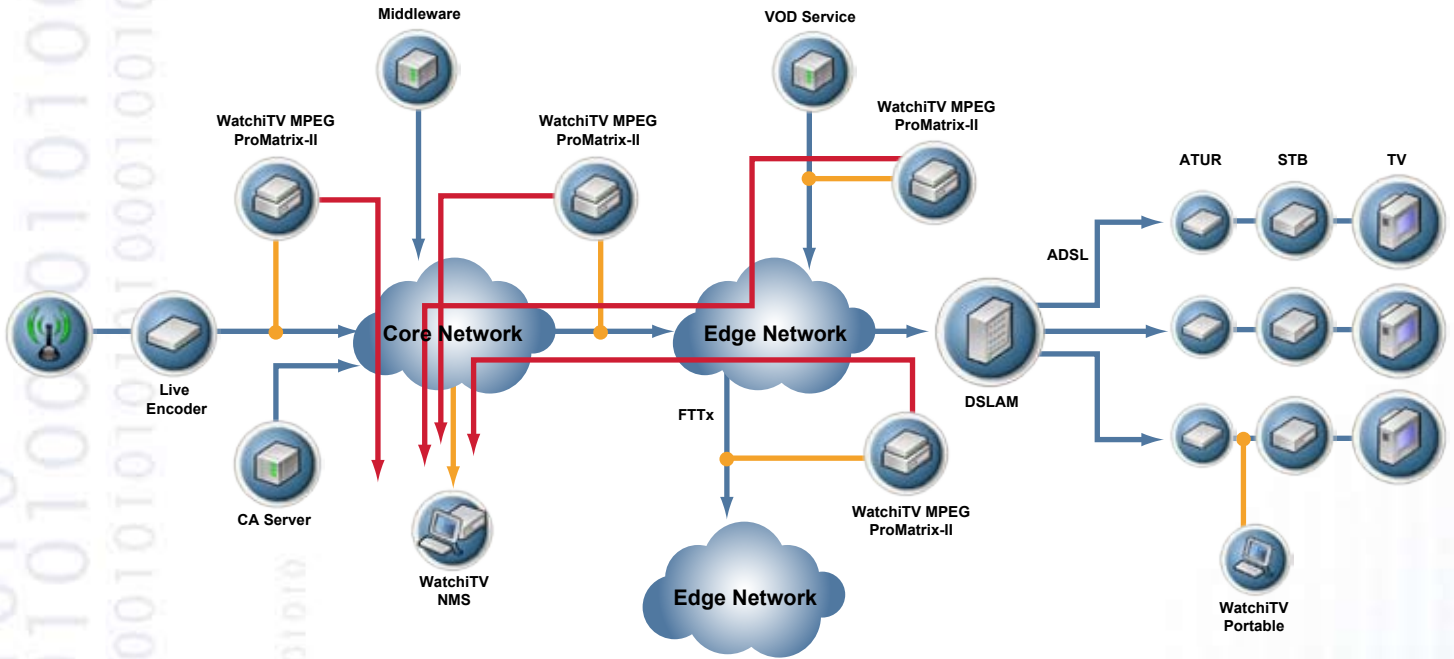


## WatchiTV NMS



IPTV is not a static service. It is challenged over and over again to deliver increasingly complex applications and services while facing stagnant or even declining budgets. To guarantee service performance and optimize network infrastructure, IPTV service providers must be able to consolidate and be at the forefront of network performance at all times in order to remain competitive.

The IPTV Network optimization solution from AnaCise enables you to proactively and efficiently manage all IPTV network and hardware elements needed to ensure reliable delivery of the IPTV service throughout the network.

WatchiTV NMS is the central yet remotely accessible data collection point in the AnaCise WatchiTV network management system. It operates as a passive, non-intrusive network monitoring system that does not generate additional load on the network and focuses on all the network's layers. WatchiTV Distributed enables you to isolate the root cause of a problem very efficiently. Thresholds exceeded in a probe will generate alarms, which are then forwarded to the central network management system where they are processed. SMSes may be then sent to your mobile phone alerting you of an abnormal condition in the network.

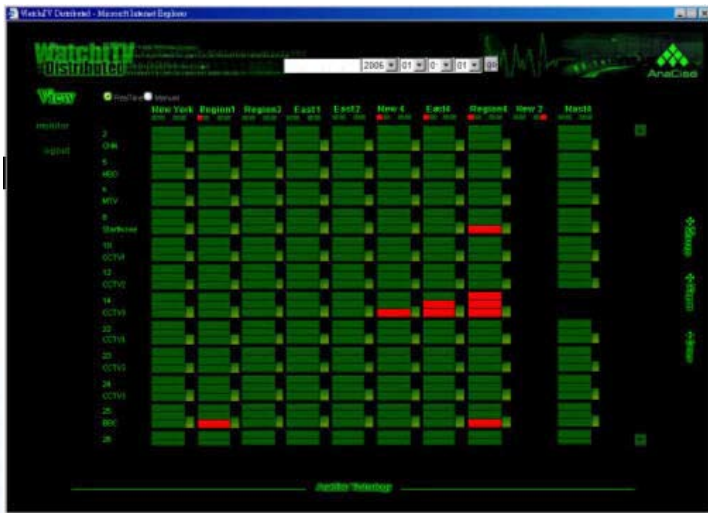
### KEY FEATURES

- Real-time H.264/MPEG4/MPEG2 Auto-detection and analysis
- GigE (Copper, Fiber) wire speed support
- PCR Jitter Analysis
- TR 101 290 Priority I, II, III
- Real-time Alarm Generation
- SNMP ver 1+2 & MIB I + II
- PES Header Analysis
- Remote Live Video Display
- Remote access Web based interface
- Multiple user access
- Period status report Yearly, Monthly, daily
- Stream copy and redirect for remote Content validation, Live video display
- Supports NTP for network time synchronization
- Remote access and login to WatchiTV MPEG for drill down to detail analysis

MPEG2	MPEG4	H.264	PES Header Decode, Live Video Display
MPEG2 Transport Stream			DVB TR 101-290 Read-Time Monitor, PCR Jitter, Packet Loss
UDP			Packet Inter-arrival Time Distribution Analysis
IP			IP Checksum Error, Pause Packet detect
Ethernet			CRC Error, Alignment Error, Dribble Error, Over/UnderSize
Copper	Fiber	Hardware Base Technology, 1000Mbps Full wire Speed	

## WatchiTV NMS

WatchiTV NMS is the central point in the distributed IPTV network monitoring system providing real time MPEG/Network management with comprehensive monitoring, alarm and report functionality. WatchiTV NMS is a scalable solution from two probes in the network to several hundreds of channels. The NMS provides easy user access via an intuitive user interface. Data from all probes in the network is collected via SNMP.



### SYSTEM COMPONENTS SPECIFICATION

#### WatchiTV NMS

- 19-inch, 1RU high rack mount
- 90 - 240 Vac, 47 - 63 Hz
- Operating temperature: +10°C to +30°C
- Two multi speed Ethernet: 10, 100, 1000 Mbps
- 32x CD-ROM
- 80 GB hard disk drive x 2
- 2 GB Memory
- PS/2 Keyboard/Mouse (2 connectors)
- USB 2.0 x 4
- HTML web browser
- SNMP network management system
- Size: 620mm x 490mm x 43.6mm

At the top of the monitoring screen, important information shows you if any thresholds have been exceeded or if a problem is building up in the network. The color red indicates a potential issue. With a single click the system will take you to the problem area, easing fault localization and the identification of potential problems.

The top level always displays the most important information:

- 1.DVB TR101-290
- 2.PCR Jitter
- 3.Packet Loss
- 4.Throughput

#### Remote Access Specifications

- Internet Explorer 6.0 or higher
- Windows Media Player 10 or higher
- Microsoft Windows 98, 2000, XP
- Minimum 300kbps network connection
- Minimum 512 MB RAM



#### ANACISE TESTNOLOGY CORP.

5F-1, No.168, Rueiguang Road, Neihu Chiu, Taipei, Taiwan, 114, R.O.C.

Tel : +886-2-2658-9980

E-mail : [marketing@anacise.com](mailto:marketing@anacise.com)

Fax : +886-2-2658-0758

Web : [www.anacise.com](http://www.anacise.com)